

Box Properties

--Description--

Name:

Type: Closed Box

Shape: Prism, square

--Box Parameters--

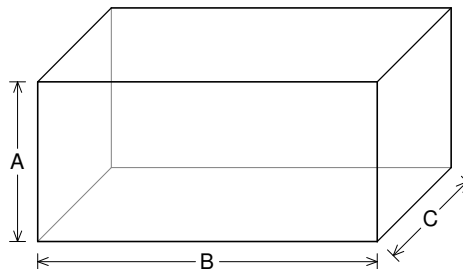
Vb = 3 cu.ft

V(total) = 3.389 cu.ft

Qtc = 1.158

F3 = 48.23 Hz

Fill = none



--External Dimensions--

A = 16 in

B = 34 in

C = 13.93 in

--Internal Dimensions--

A = 14.5 in

B = 32.5 in

C = 12.43 in

--Wall Thickness--

Front = 0.75 in

Side = 0.75 in

Driver Properties

--Description--

Name: SXX 15 D4

Type: Standard one-way driver

Company: RE Audio (2015)

--Configuration--

No. of Drivers = 2

Mounting = Standard

Wiring = Parallel

Drivers sum coherently = Yes

Dual voice coils = parallel

--Driver Parameters--

Fs = 44.67 Hz

Qms = 10.22

Vas = 1.311 cu.ft [2.622]

Xmax = 1.1 in

Sd = 128.6 sq.in [257.2]

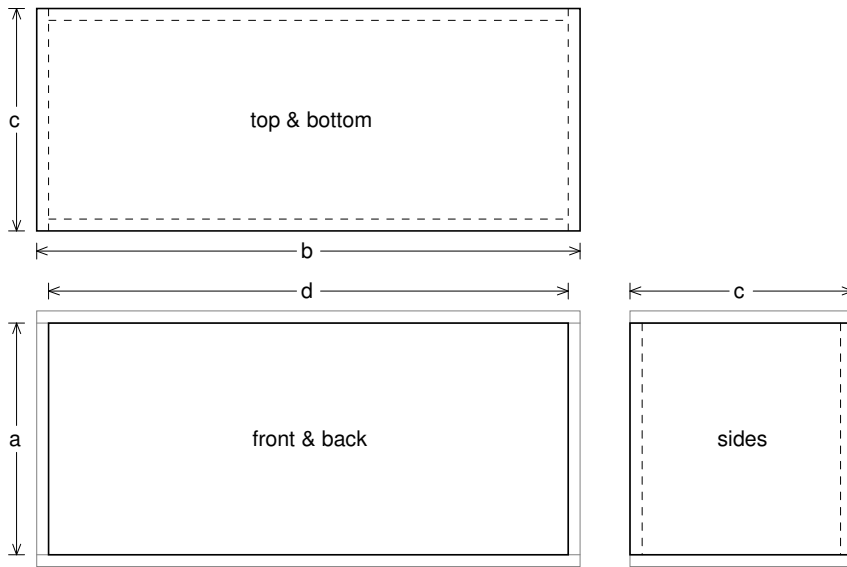
Qes = 0.998

Re = 2.034 ohms [1.017]

Le = 2.268 mH [1.134]

Z = 2.441 ohms [1.22]

Pe = 1200 watts [2400]



Box Parts

Box Shape: Square Prism

1 Top, 1 Bottom: depth (c) = 13.93 in
width (b) = 34, thickness = 0.75 in

1 Front, 1 Back: height (a) = 14.5 in
width (d) = 32.5, thickness = 0.75 in

2 Sides: height (a) = 14.5 in
depth (c) = 13.93, thickness = 0.75 in

--Driver Mounting--

Mounting: Front

Aim: All drivers face same direction



Wiring Diagram

